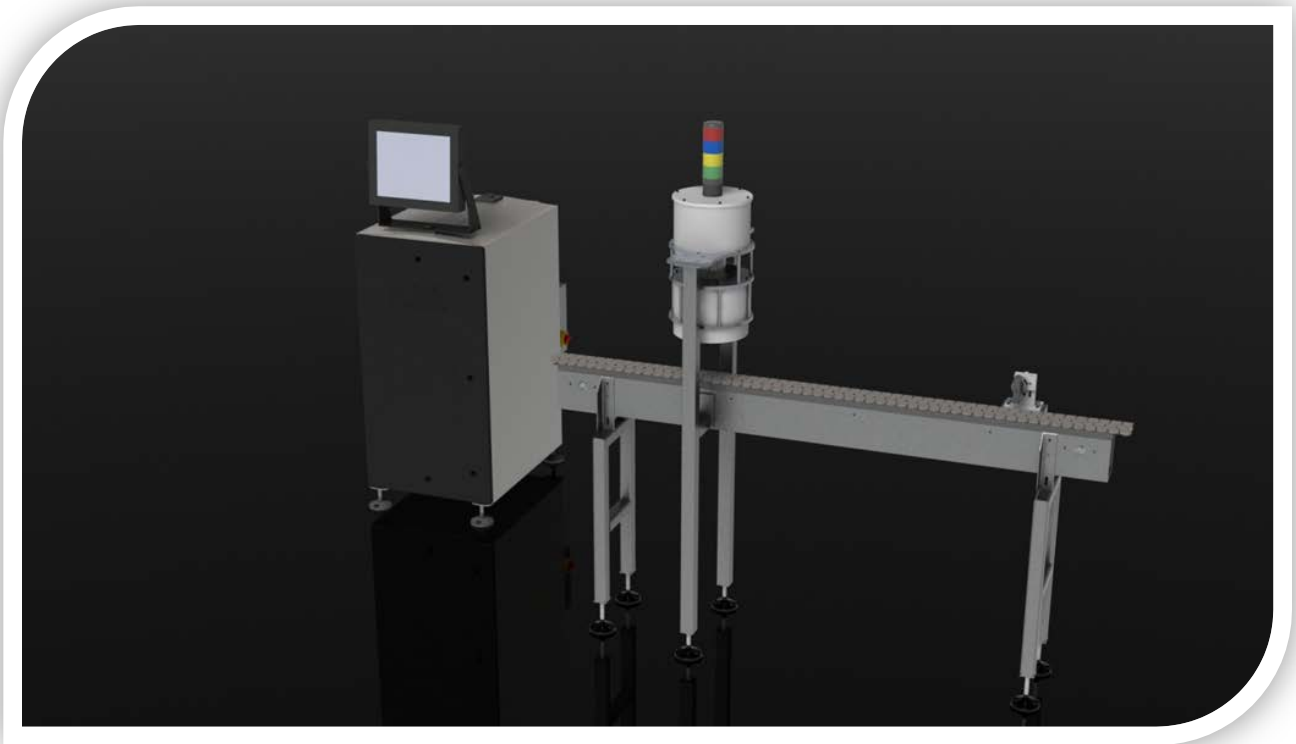


IVIS OCV 360

CARE
CONTROLS

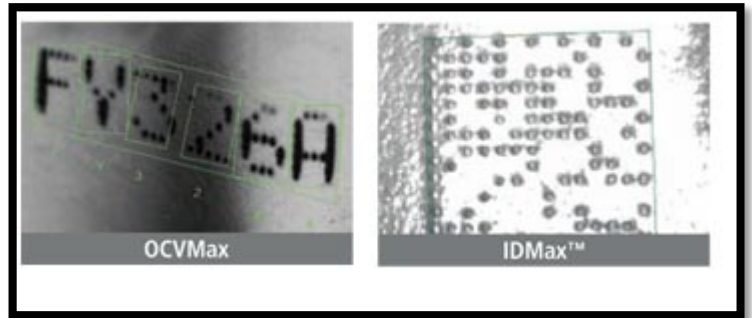


Technology

A Care Controls Inc. code verification system that compares the product code on the end of the can to a reference product code entered for a match. It provides high-speed character verification, even if print is distorted in some way, using both image-based and printer font-based training.

Highlights

- Quick and easy changeovers
- Easy to use
- Touch display
- Wet or dry environment



Features



- Touch display (HMI)
- Custom lighting
- Optional precision automatic position system for accurate inspections and fast changeover times
- Inspects large variety of container types and sizes
- Highly reliable design in even the most harsh and noisy environments
- 100% inline inspection of every can

Specifications

<i>Operating Speed</i>	2400 cpm (depending on application)
<i>Power Requirements</i>	100-250 VAC isolated incoming power for electronics; 240 VAC three-phase or 480 VAC three-phase for motor (VFD recommended)
<i>Pneumatic Requirements</i>	35-50 psi; ¼" standard (options available)
<i>Spacing Requirements</i>	Zero backline pressure from containers. Accumulation should stop 20 inches from discharge or eject
<i>Display</i>	LCD color touch display
<i>Operating Conditions</i>	Stable ambient temperature: 32° to 122° F (0° - 50° C)
<i>Communications</i>	Ethernet for remote connection, wireless version (optional); standard line control discrete I/O; extended I/O available for results, status and line control
<i>Enclosure</i>	Water resistant; air conditioned; shielded
<i>Lighting</i>	Custom
<i>Length</i>	84.0" standard; conveyor extensions available
<i>Eject</i>	Pneumatic cylinder with soft bumper
<i>Tolerance</i>	Adjustable limits
<i>Interface</i>	Intuitive with multiple access levels
<i>Construction</i>	Stainless Steel, engineered plastics, and aluminum (Durable foodgrade construction for the food and beverage industries)